



# Recovery Programme

## Insurance solutions to help employees and businesses recover from COVID-19

The COVID-19 pandemic has changed how we live and work. Putting untold pressure on the financial and human resources for businesses, both large and small.

Our COVID-19 insurance programme provides the financial support businesses and employees need to help the healing process and promote recovery.

### Benefits for employees and businesses



#### Adjusting to a new normal

Helping business owners navigate the changing duty of care landscape with benefits designed to respond to the COVID-19 pandemic



#### Support following hospitalisation

Payments made to employees following hospitalisation to ease the financial pressure of healing



#### Recovering from reinfection

No previous medical exclusions, meaning employees are covered for new COVID-19 infections as well as reinfections



#### Protecting employees everywhere

Employees are covered whether they are working remotely from home or at their usual place of work



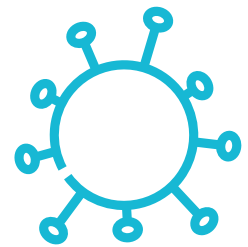
#### Flexible lump sum payments

Financial support for employees to help cover childcare costs, alternative transportation and wellness activities

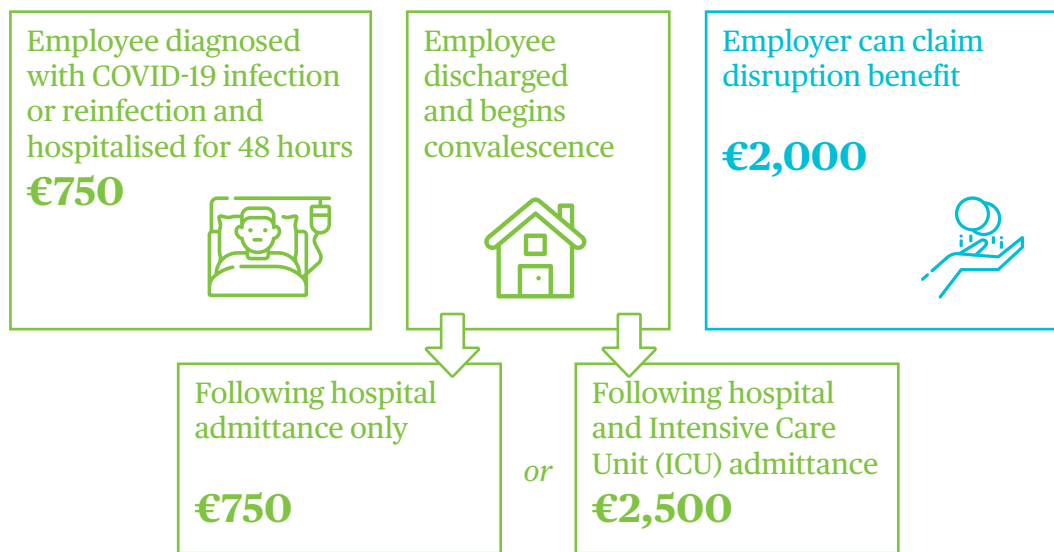


#### Help for businesses

Payments to help cover expenses such as premises deep clean, recruitment costs and delivery of equipment to home-based employees



## Chubb responds to COVID-19 risks



## Policy coverage

Coverage - employee*	Benefit
Hospitalisation benefit	€750
Convalescence benefit following hospital discharge <i>or</i> Convalescence benefit following discharge from ICU	€750 €2,500
Coverage - employer	Benefit
Employer disruption benefit	Up to €2,000

\*Payments for employee claims are made via the employer.

## Get in touch

Contact your local A&H underwriter for more information and to arrange cover.

All content in this material is for general information purposes only. It does not constitute personal advice or a recommendation to any individual or business of any product or service. Please refer to the policy documentation issued for full terms and conditions of coverage.  
Chubb European Group SE is an undertaking governed by the provisions of the French insurance code with registration number 450 327 374 RCS Nanterre. Registered office: La Tour Carpe Diem, 31 Place des Corolles, Esplanade Nord, 92400 Courbevoie, France. Chubb European Group SE has fully paid share capital of €896,176,662.  
Chubb European Group SE, Belgium Branch, Chaussée de la Hulpe 166, 1170 Brussels, company number BE0867.068.548. In Belgium it falls under the conduct of business rules of the Financial Services and Markets Authority (FSMA). Code NBB/BNB 2312.