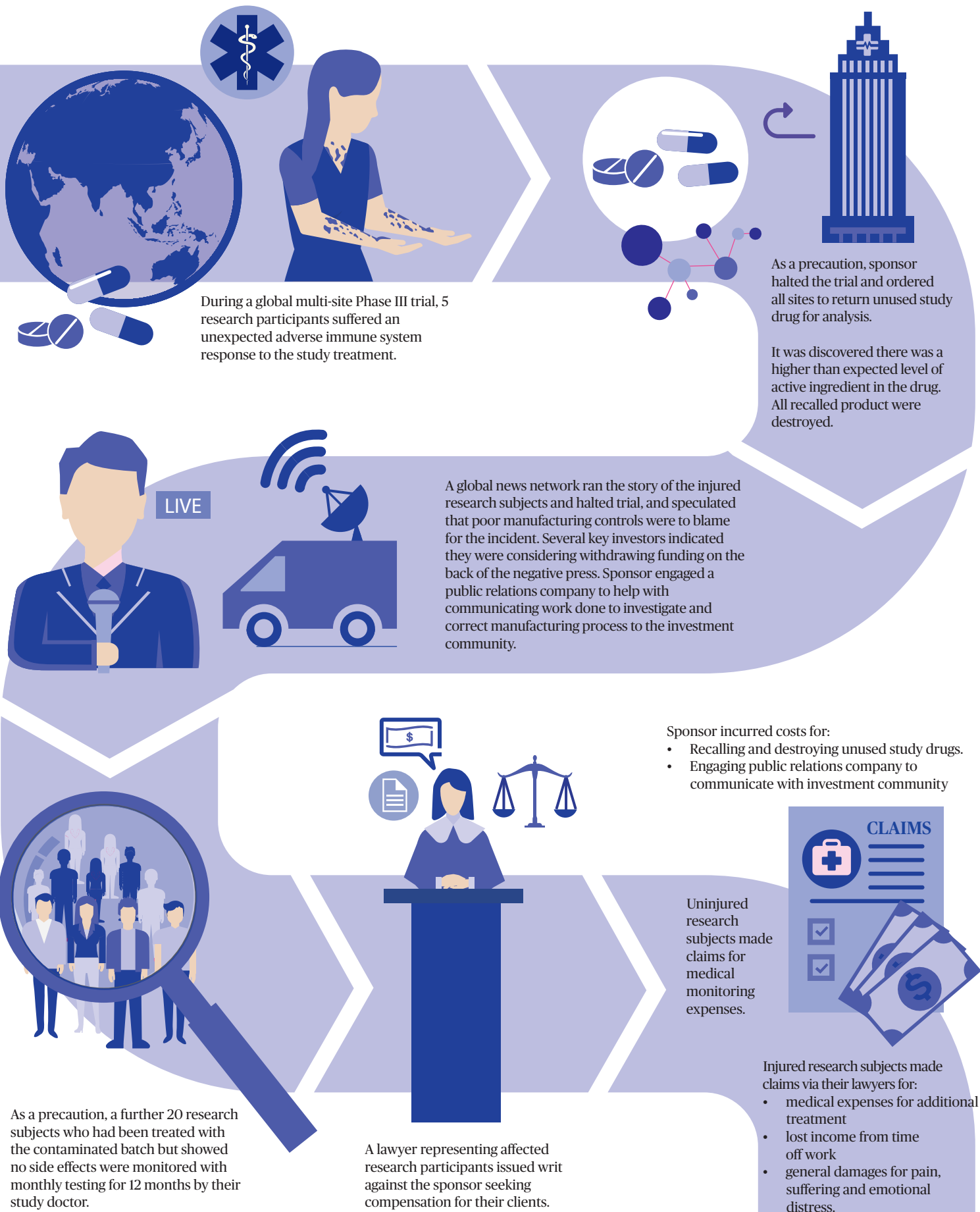


Clinical Trials Liability Policy Case Study



Coverage Response



Loss: Sponsor's costs from recalling and destroying unused study drugs.

Section 1.2 - Clinical Trials Extras, Product Recall Expenses extension would cover costs associated with transportation and destruction of unused study drugs.



Loss: Sponsor's costs from hiring a public relations company.

Section 1.2 - Clinical Trials Extras, Crisis Response Expenses extension would cover insured's costs of engaging the public relations company.



Loss: Medical expenses incurred by uninjured research subjects exposed to contaminated drug for monitoring tests.

Section 1.2 - Clinical Trials Extras, Medical Monitoring Expenses would cover the costs of the medical testing performed on these research subjects.



Loss: Compensation claims brought by research subjects who had suffered adverse immune system response.

Section 1.1 - Clinical Trials Liability coverage would respond to cover costs associated with investigating claims and negotiating settlement of these claims. Would also cover the settlement amounts agreed to with the injured research subjects. Claim investigation expenses would not reduce policy limits, leaving full amount of those limits available for compensating injured research subjects.

Additional Benefits with Chubb's Clinical Trials Liability Wording



No fault reimbursement of up to \$10,000 for Medical Expenses paid by the Insured to treat a Research Subject injured by the medical product being tested in an insured Clinical Trial.



Legal costs to attend coronial inquests or regulatory inquiries connected with injuries to Research Subjects happening during an insured Clinical Trial.



Automatic Extended Reporting Periods for claims made by a Research Subject after policy has expired.



Indemnity for third parties such as Clinical Trial Contractors, Contract Research Organisations, Ethics Committees and independent Data Safety Monitoring Boards.



Extended Liability feature covering claims made during the Extended Reporting Period for injuries happening to Research Subjects after the policy expires, but that are related to claims previously made by other Research Subjects or to Circumstances notified during the Policy Period.



Cover for Privacy Injury or Reputational Injury to third parties caused by an Act in connection with an insured Clinical Trial.



Cover for expenses incurred by insured following a Privacy Data Breach in connection with an insured Clinical Trial.